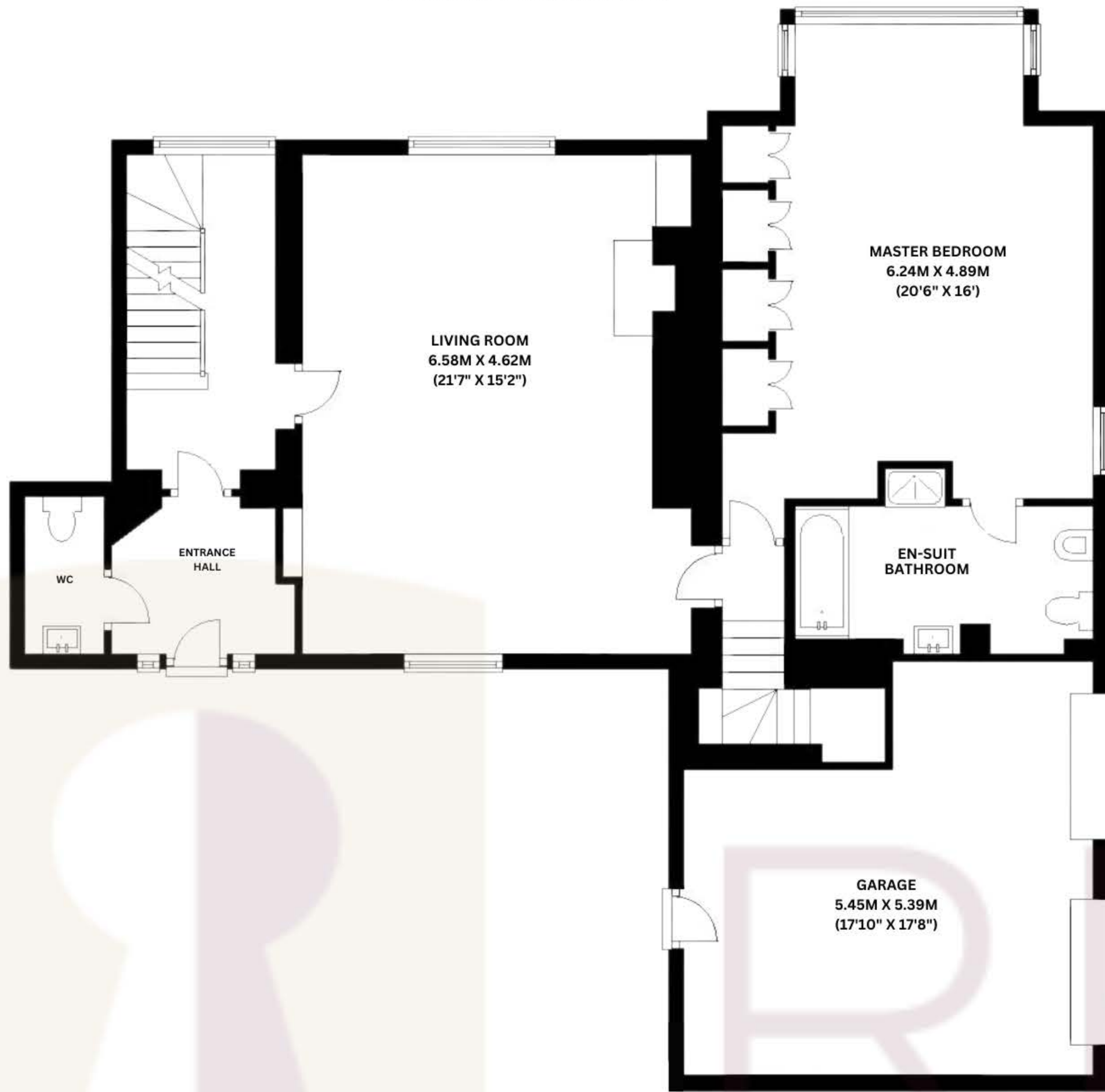
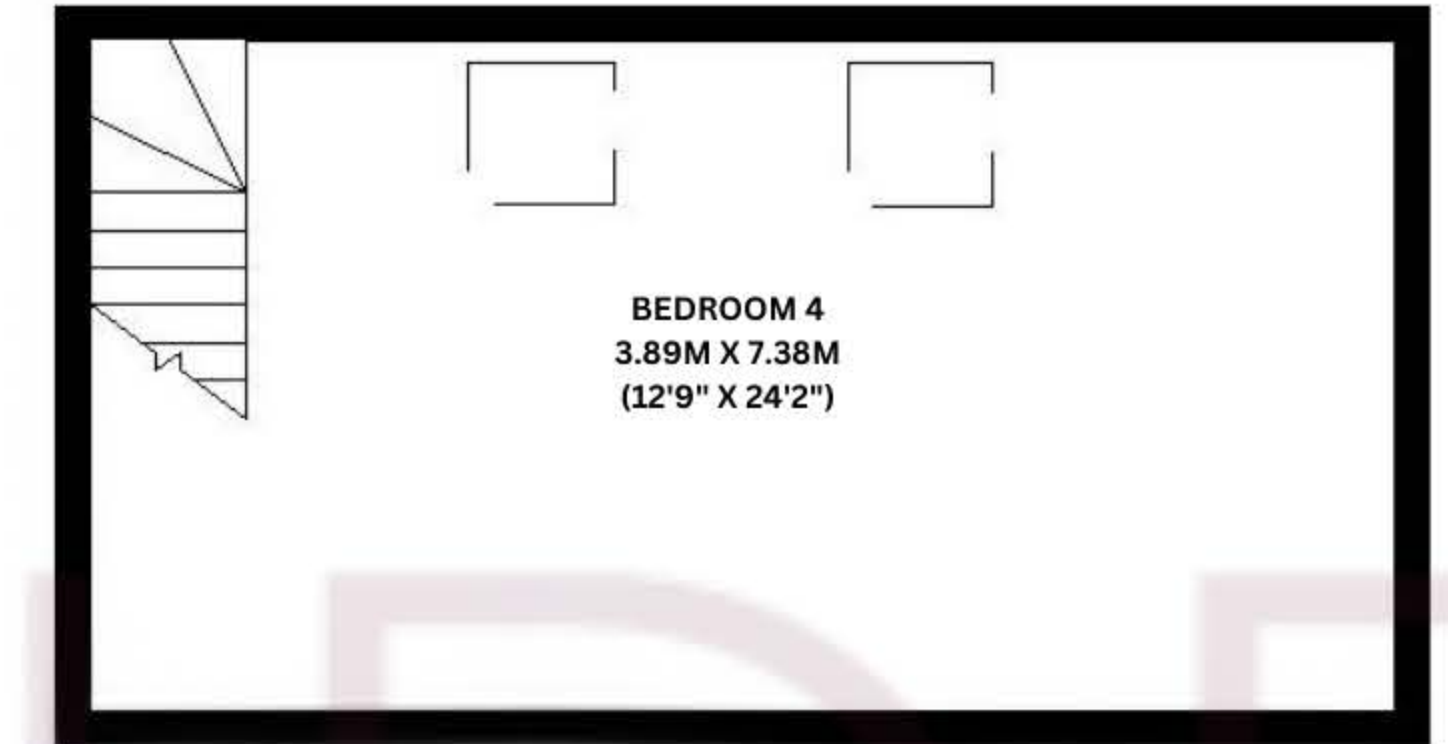


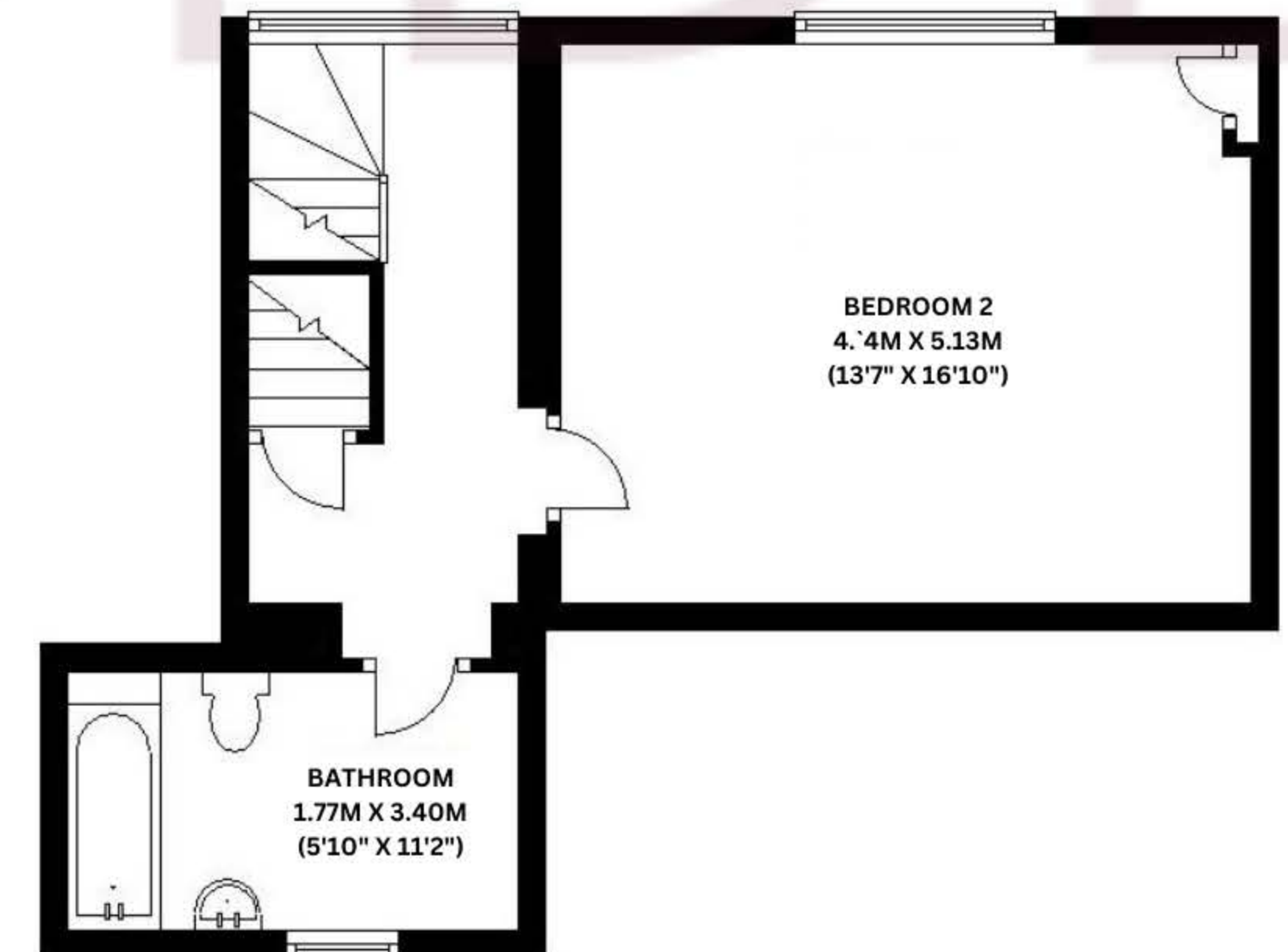
**GROUND FLOOR**  
APPROX 114.0 SQ. METERS (1,227 SQ. FEET)



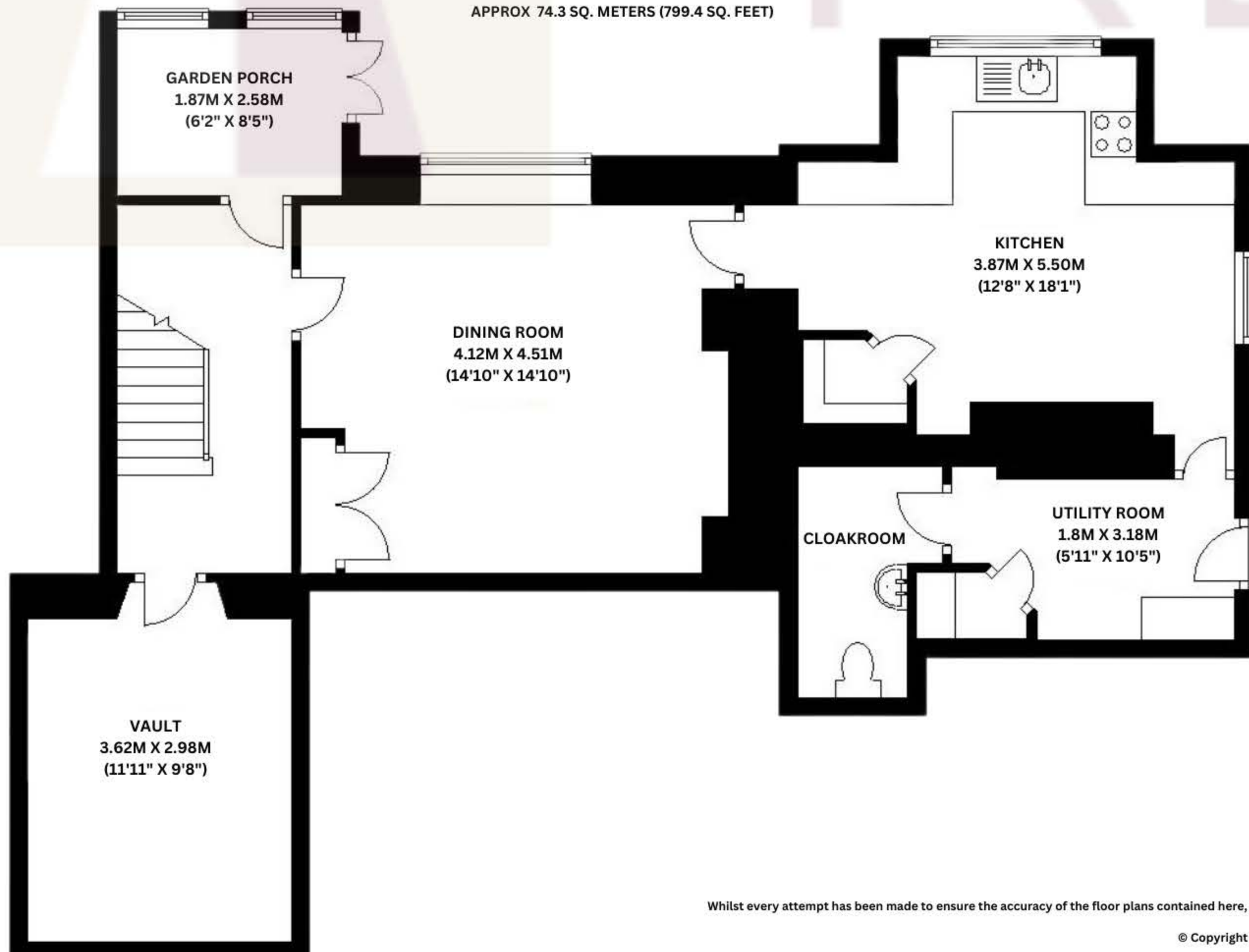
**SECOND FLOOR**  
APPROX 28.6 SQ. METERS (308.2 SQ. FEET)



**FIRST FLOOR**  
APPROX 58.2 SQ. METERS (626.0 SQ. FEET)



**LOWER GROUND FLOOR**  
APPROX 74.3 SQ. METERS (799.4 SQ. FEET)



**TOTAL AREA: APPROX 275.1 SQ. METERS (2,960.9 SQ. FEET)**

Whilst every attempt has been made to ensure the accuracy of the floor plans contained here, measurements of doors, windows, and rooms are approximate and no responsibility is taken by Reside Bath Limited for any error, omission or mis-statement. These plans are for representation purposes only as defined by the RICS Code of Measuring Practice and should be used as such by any prospective tenant or owner.  
© Copyright Reside Bath Limited 2024. Any copying, reproducing or unauthorised use of this floor plan is strictly prohibited. Plan created using PlanUp.

INGLESKOMBE HOUSE, HAYCOMBE LANE, ENGLISHCOMBE, BATH, BA2