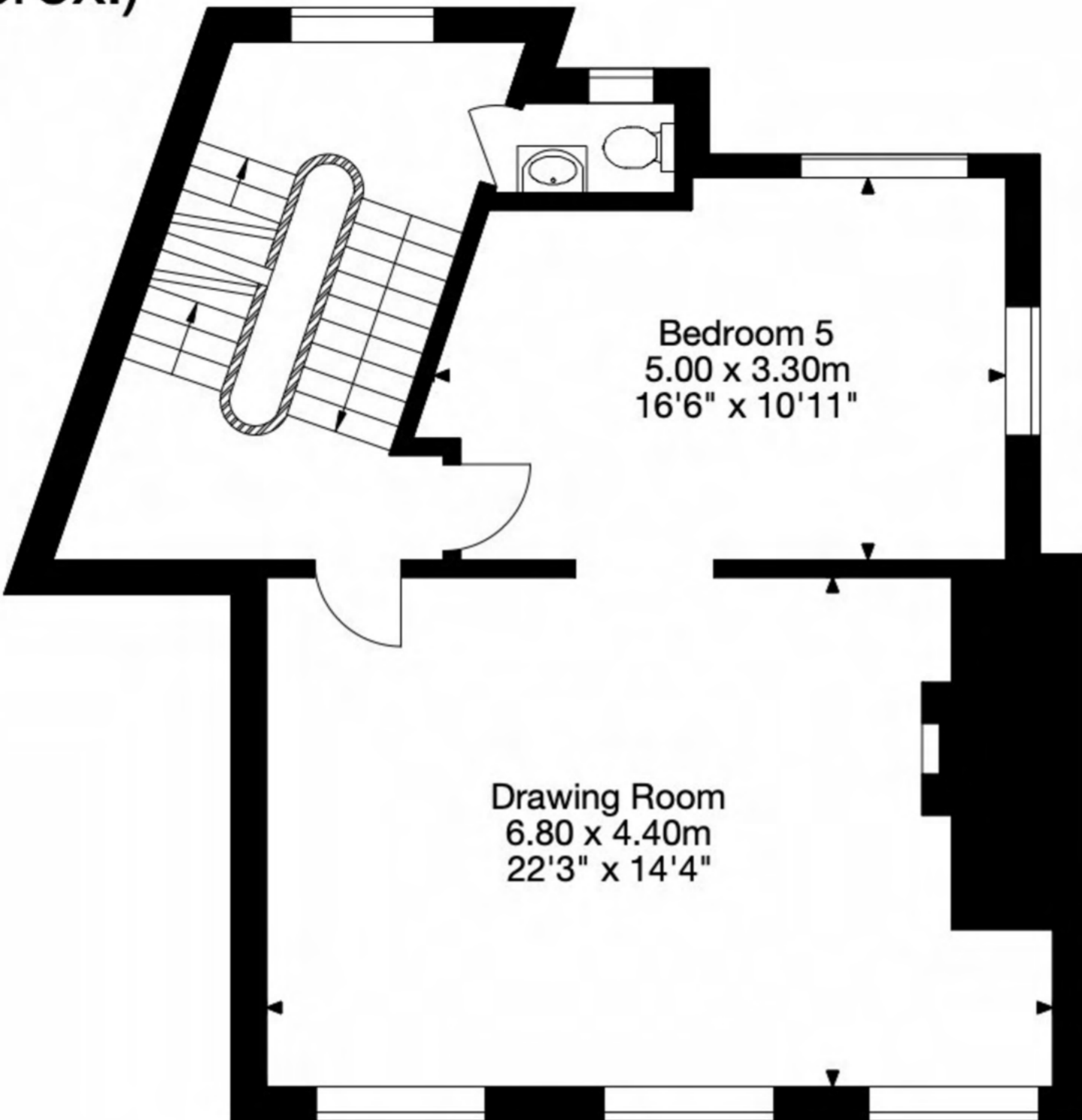
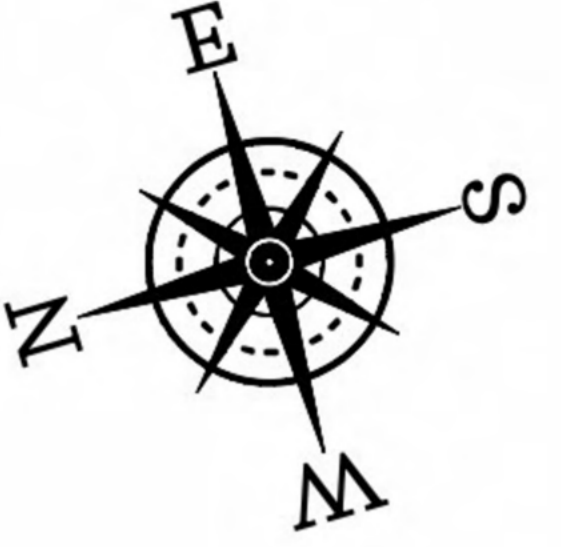
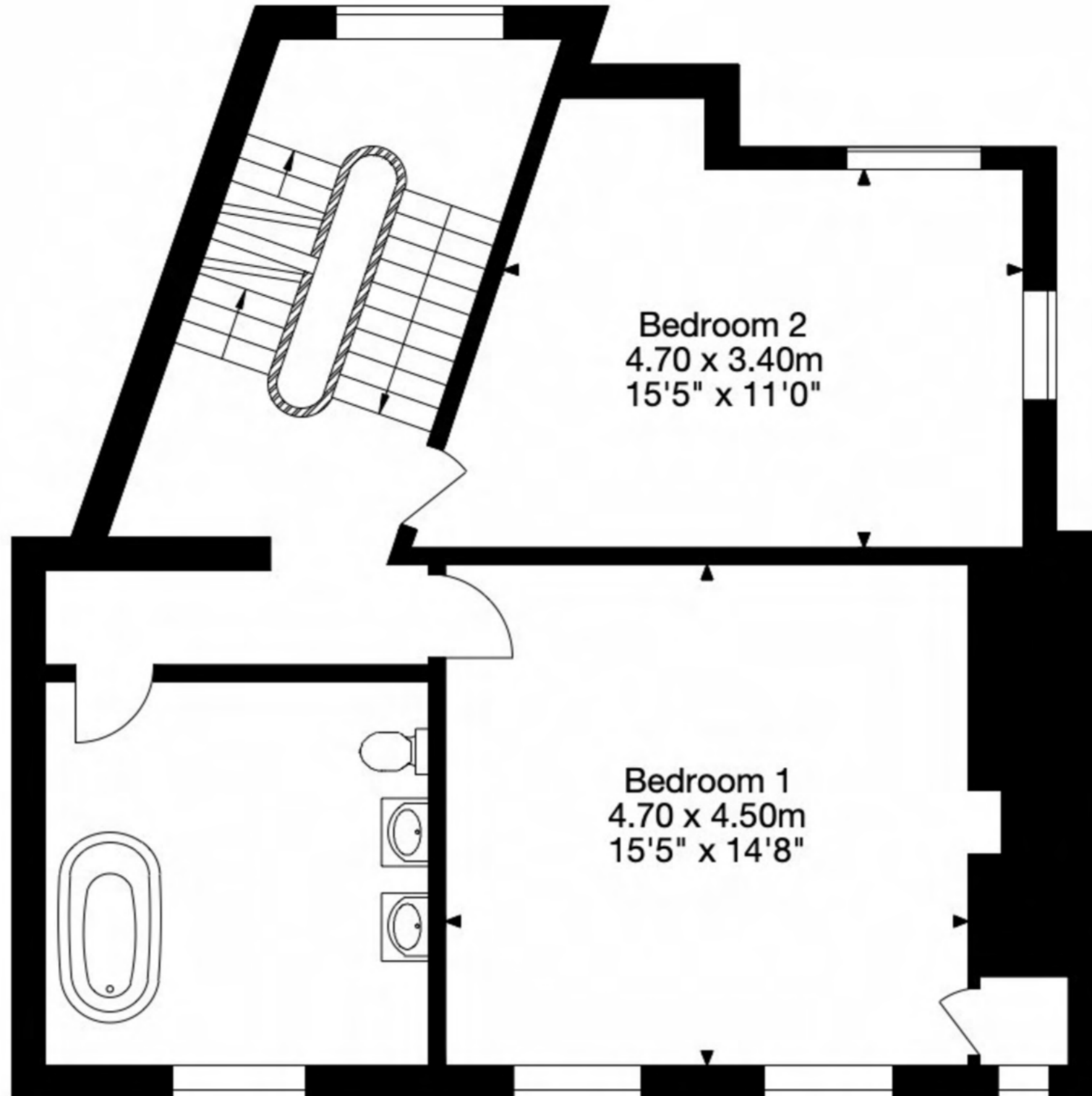


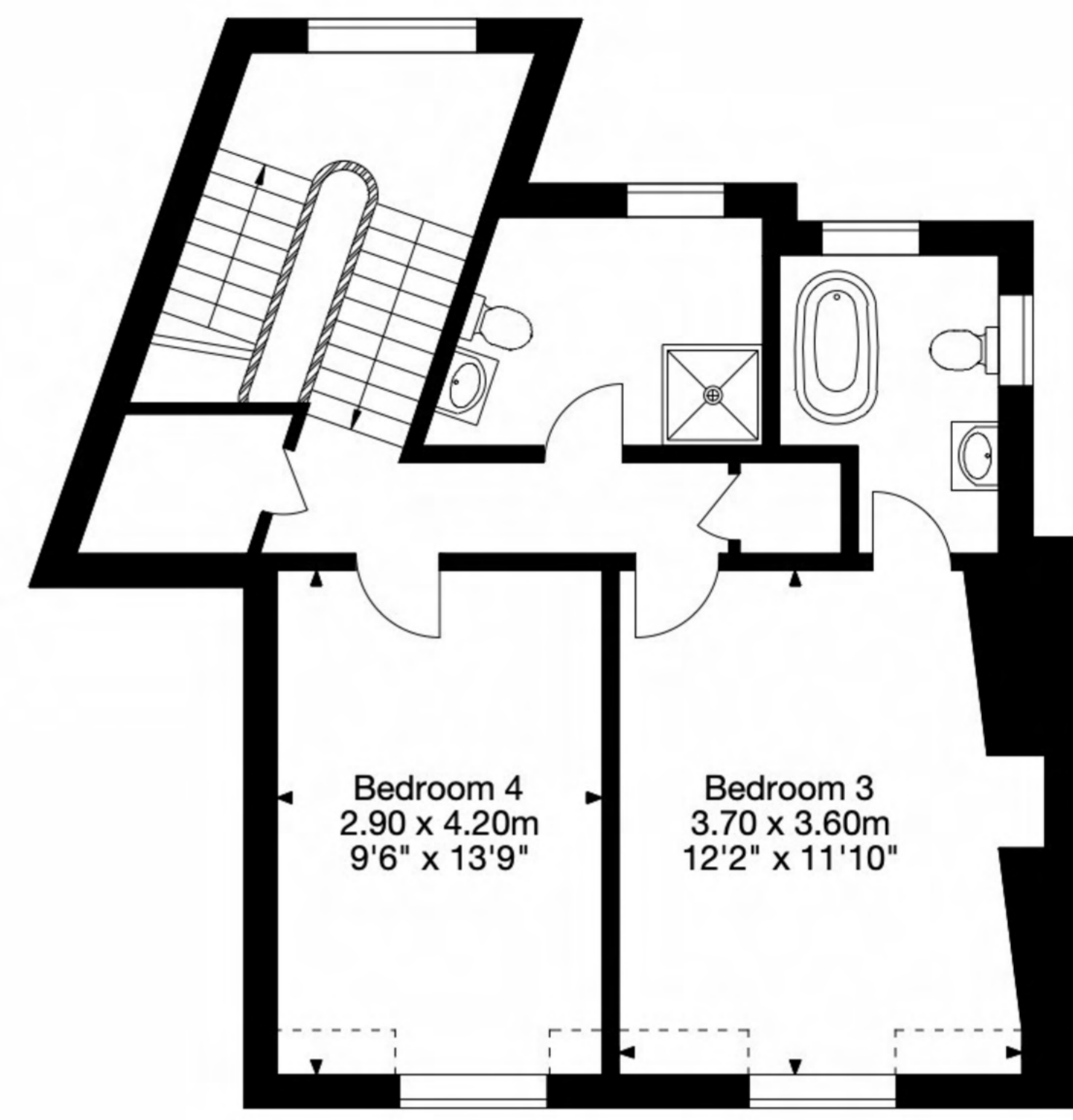
6 North Parade Buildings, Bath, BA1 1NS
 Gross Internal Area (Approx.)
 368 sq m / 3,961 sq ft



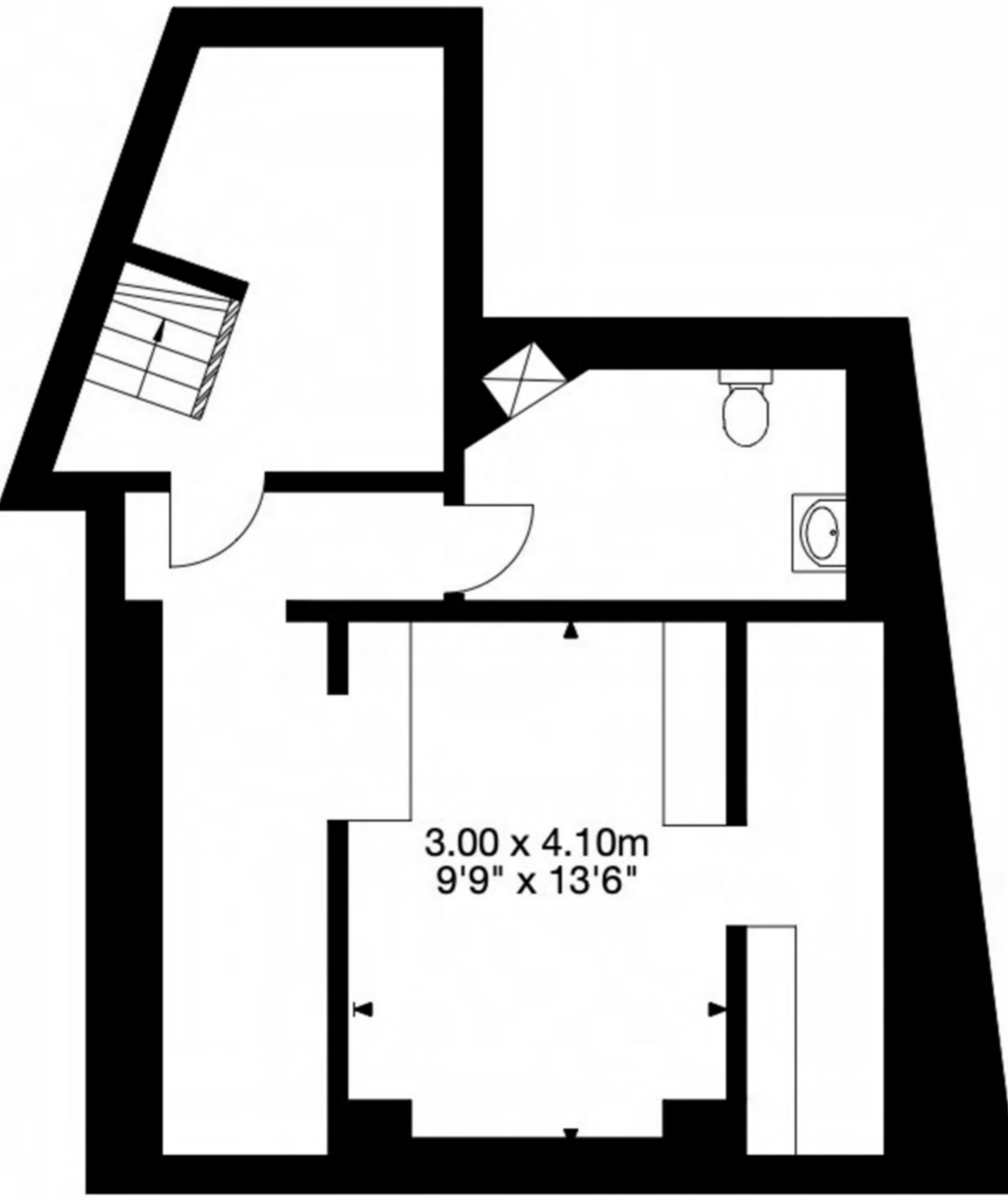
First Floor



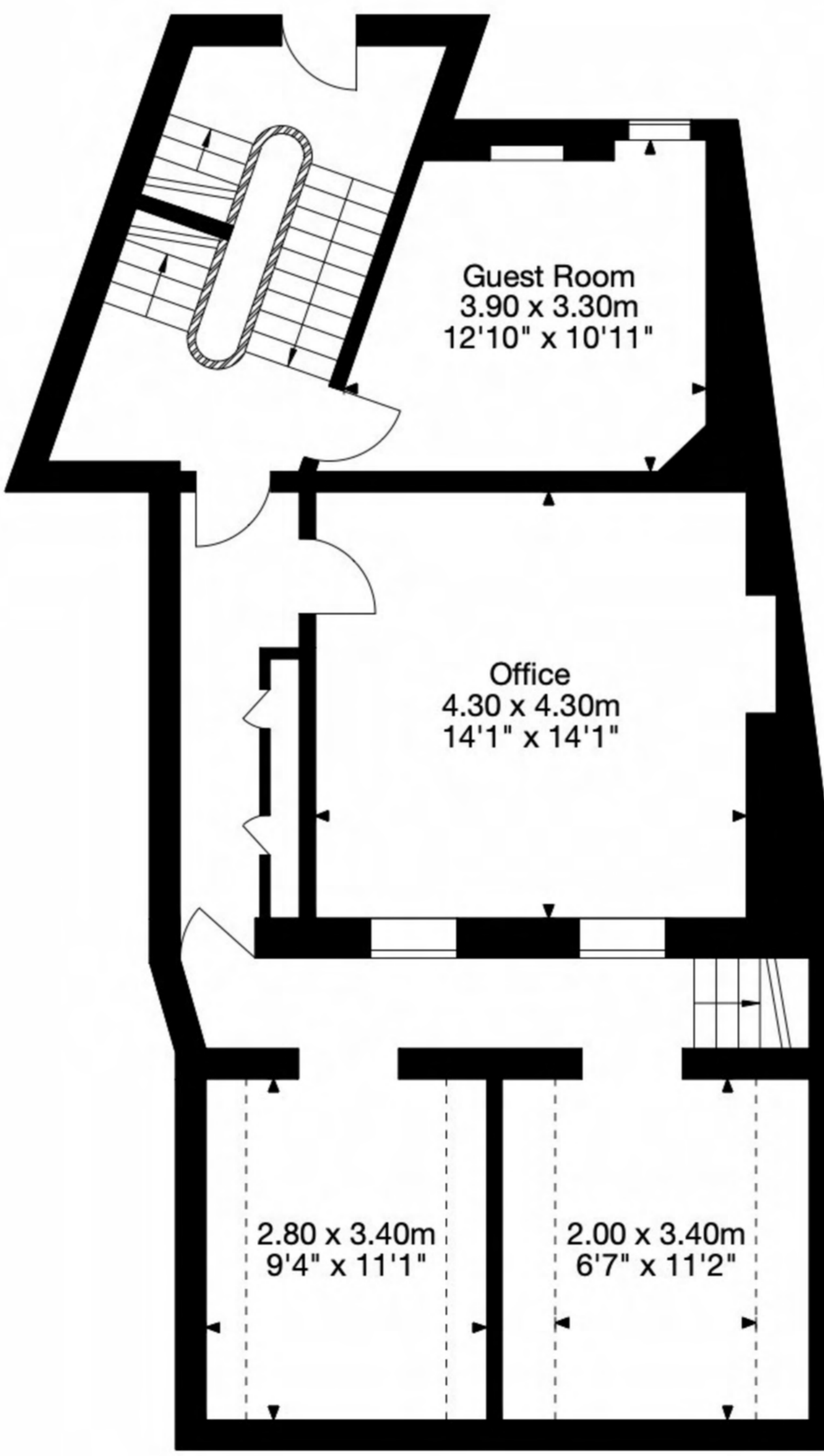
Second Floor



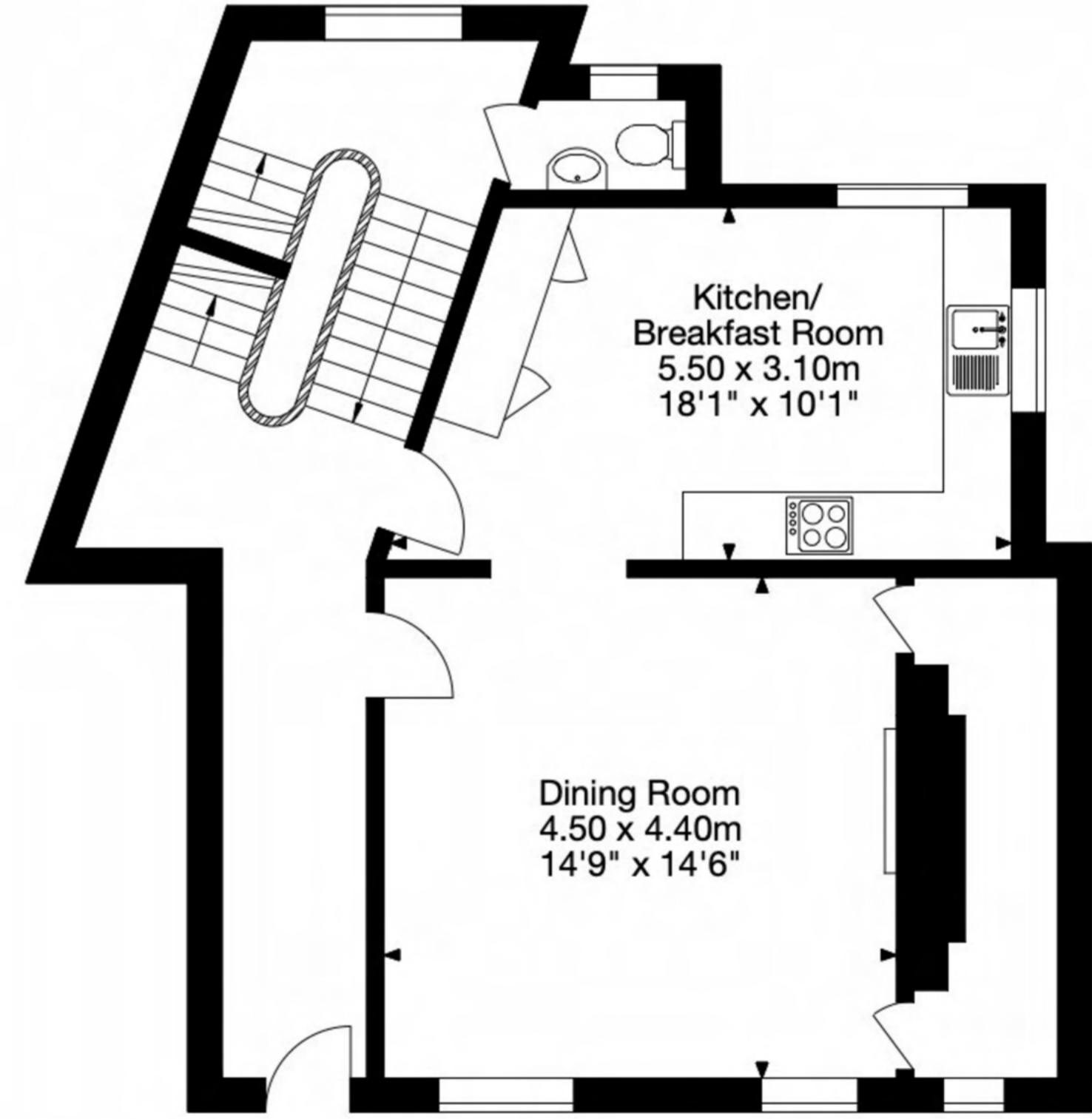
Third Floor



Basement



Lower Ground Floor



Ground Floor



Capture Property Marketing 2024. Drawn to RICS guidelines. Not drawn to scale.
 Plan is for illustration purposes only. All features, door openings, and window locations are approximate.
 All measurements and areas are approximate and should not be relied on as a statement of fact.

