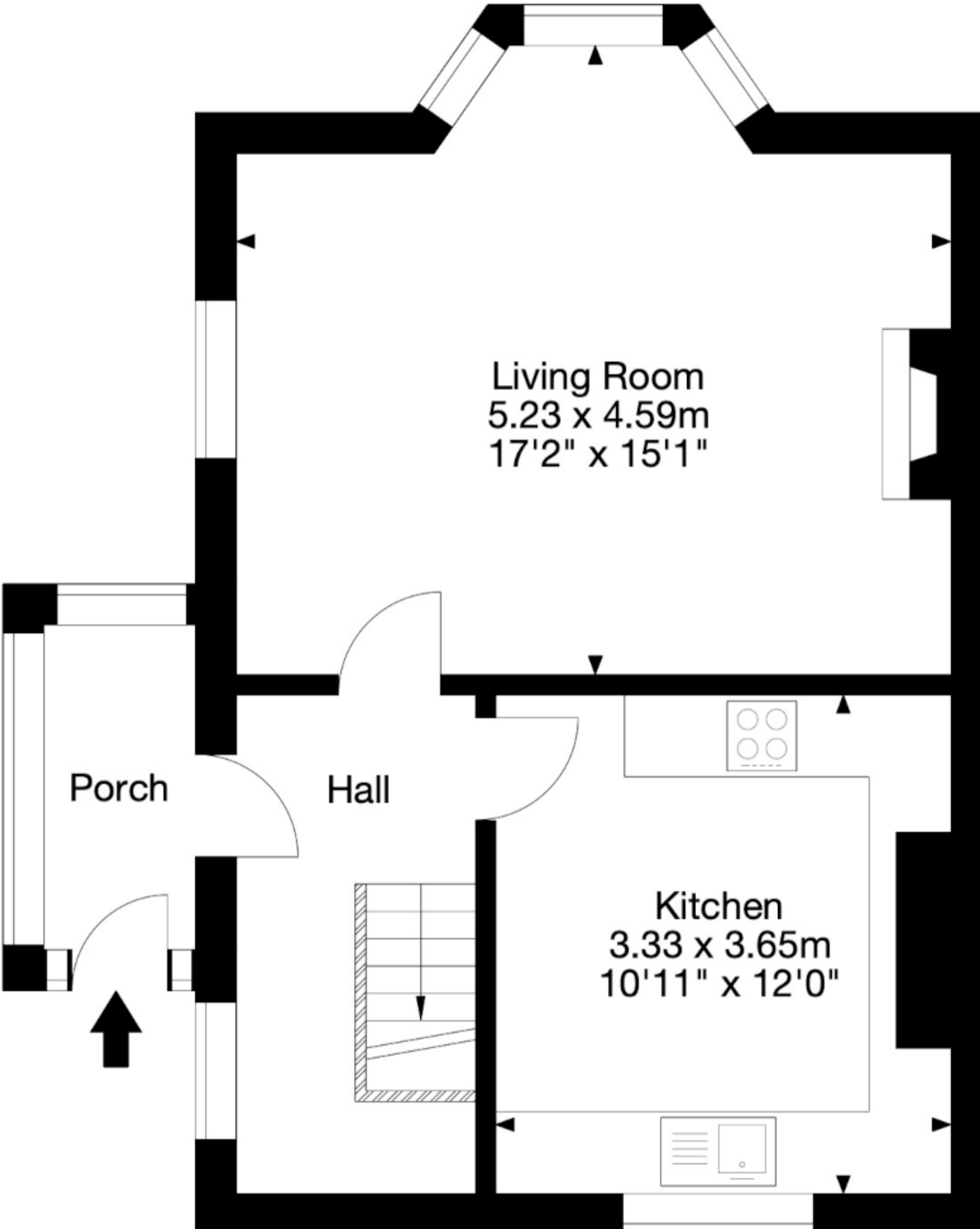
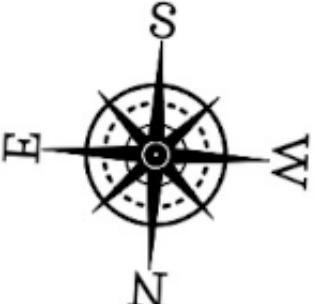
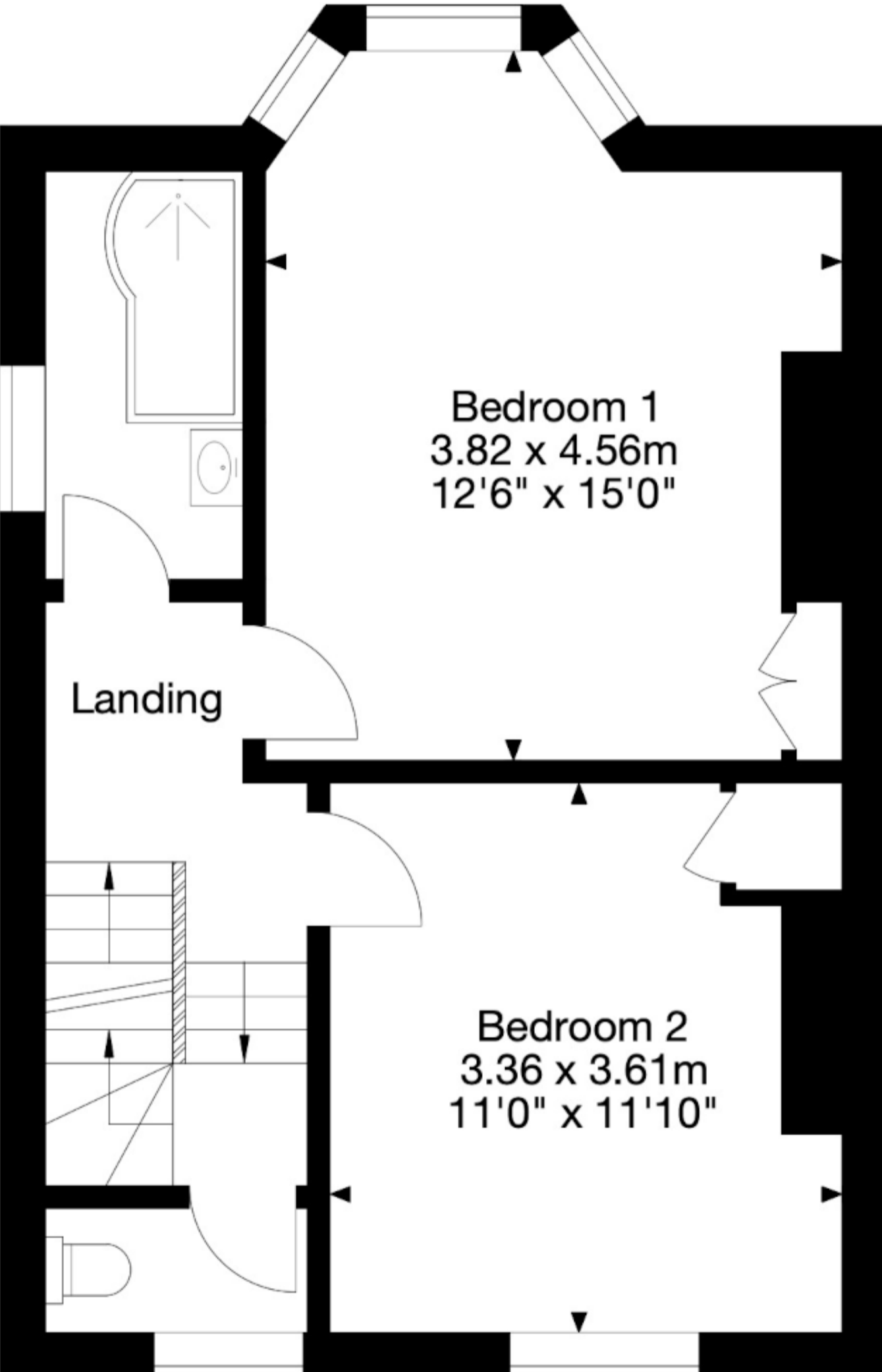


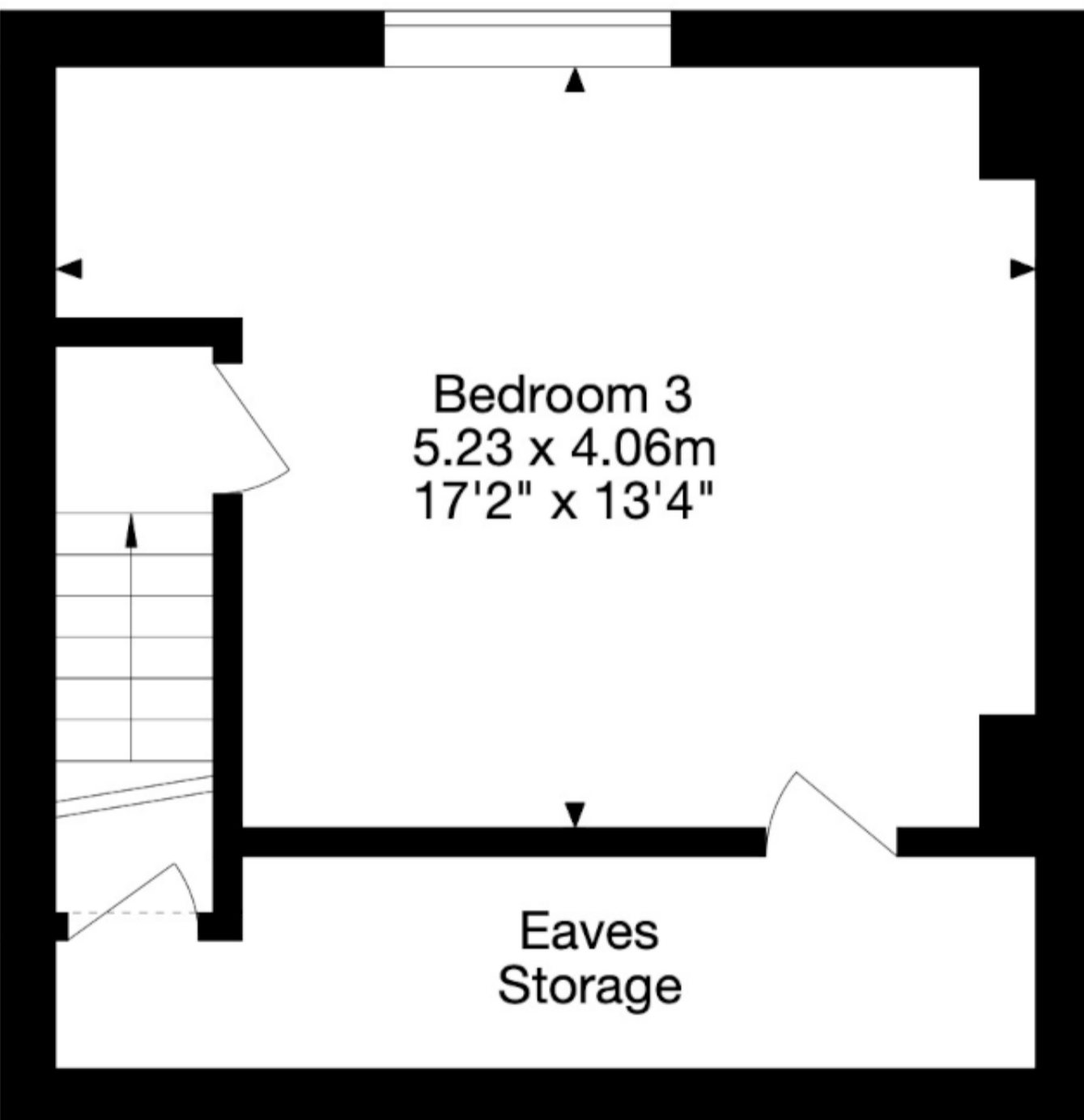
18 Chilton Road, Bath BA1 6DR  
Gross Internal Area (Approx.)  
106 sq m / 1,138 sq ft  
(Excl. Porch and Eaves Storage)



Ground Floor



First Floor



Second Floor



© Capture Property Marketing 2025. Drawn to RICS guidelines. Not drawn to scale.  
Plan is for illustration purposes only. All features, door openings, and window locations are approximate.  
All measurements and areas are approximate and should not be relied on as a statement of fact.

