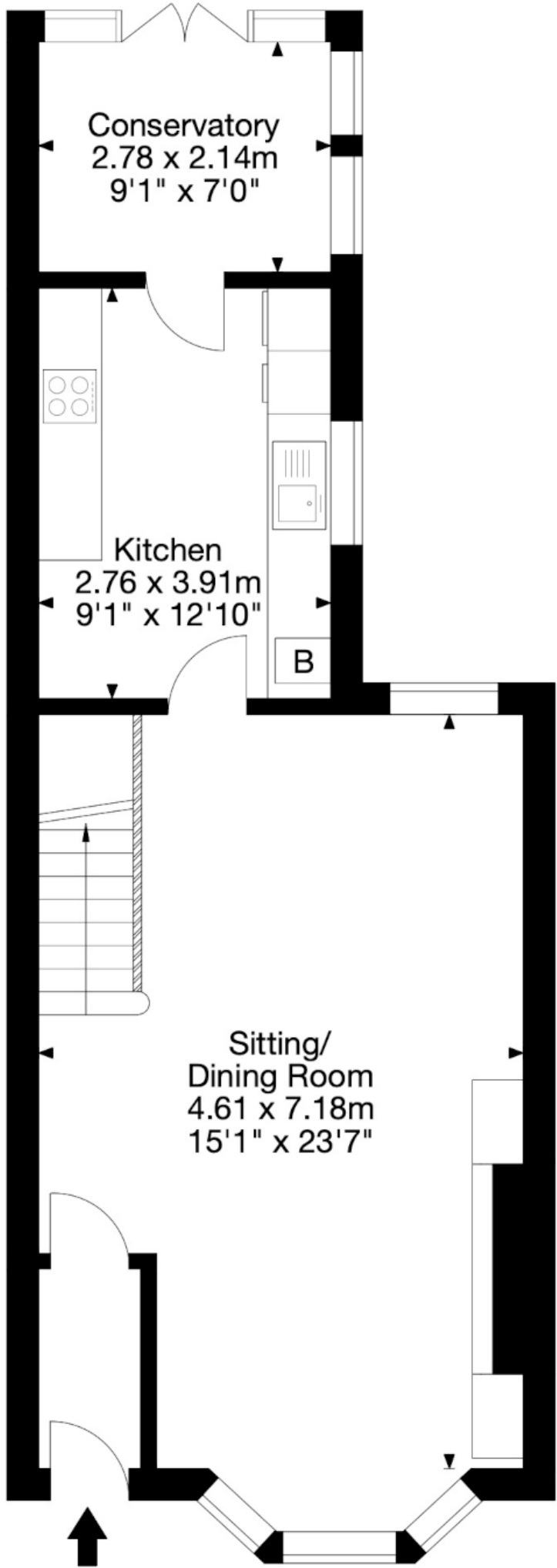
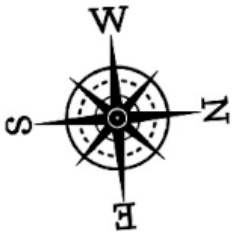
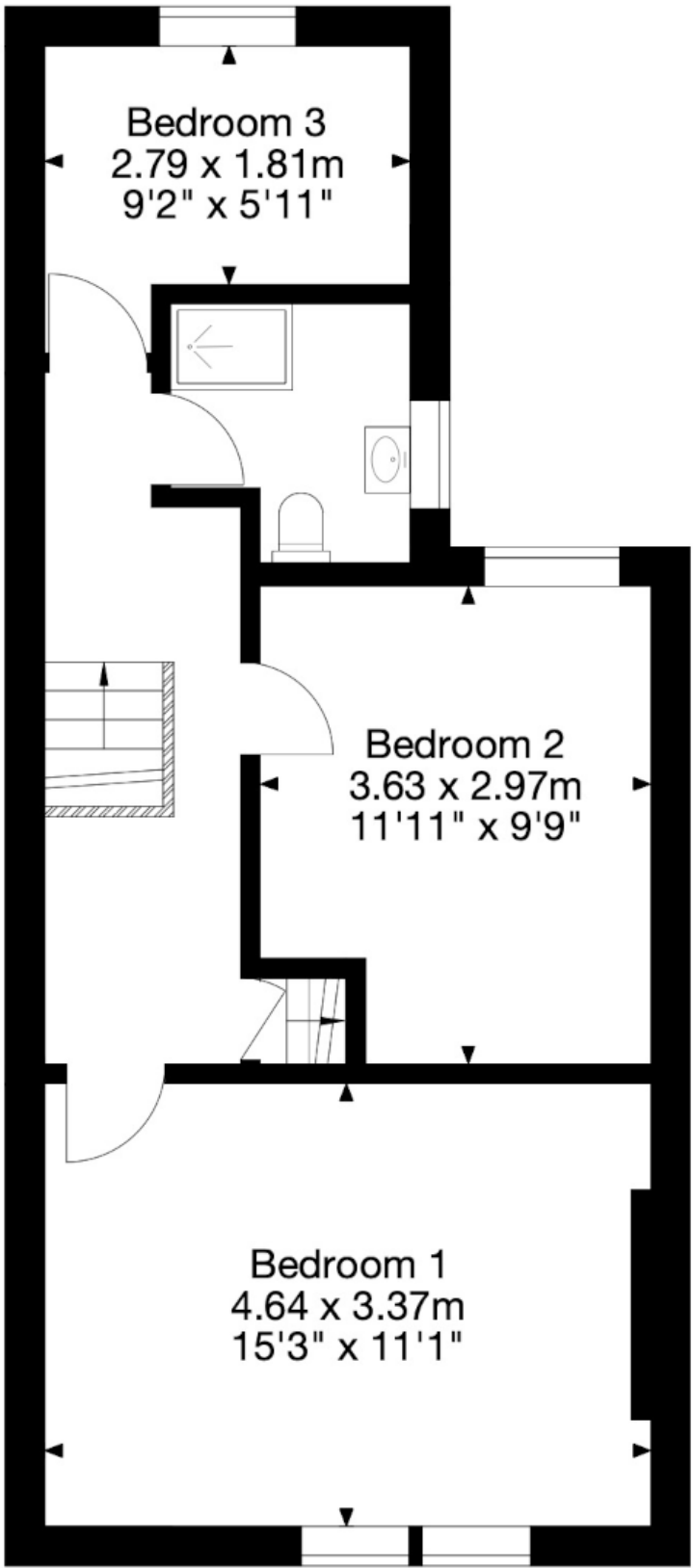


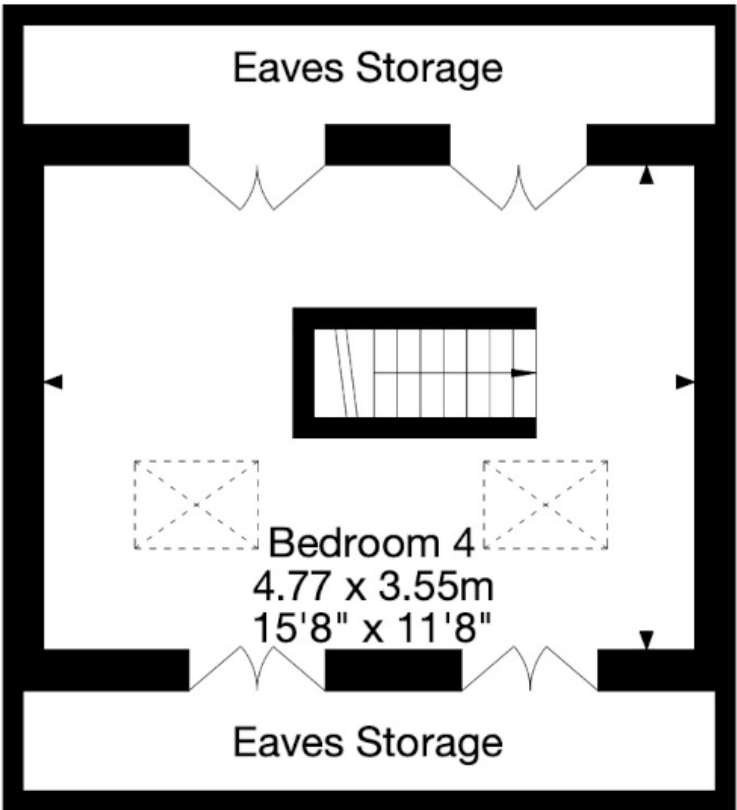
49 Ringwood Road, Oldfield Park, Bath BA2 3JL
Gross Internal Area (Approx.)
Total Area = 113 sq m / 1,216 sq ft



Ground Floor



First Floor



Second Floor



RESIDE

Capture Property Marketing 2025. Drawn to RICS guidelines. Not drawn to scale.
Plan is for illustration purposes only. All features, door openings, and window locations are approximate.
All measurements and areas are approximate and should not be relied on as a statement of fact.

Capture.